



THE PALMER ESTATE

2,616 SQ FT · 4 BEDS · 2.5 BATHS

Edgewater Hill



The Traditional Palmer Estate has an exterior that combines classic brick, siding, and a front porch that makes this home an ageless beauty. The heart of this home is the kitchen that opens to the breakfast and family room with gas fireplace. Exceptional mud room with a pocket office right off the kitchen. A switchback staircase to the 2nd level primary bedroom includes a tray ceiling, dual closets, and an indulgent posh bath. 3 Bedrooms, main bath with double bowl vanity, laundry room, and a study loft/office completes the 2nd level. The Neighborhoods at Edgewater Hill is a unique community with generous allowances for cabinetry, appliances, and lighting. No two homes will be the same as plans are removed once selected. Make your reservation today!



**BERKSHIRE
HATHAWAY** | New England
HomeServices Properties

JOYCE COVONE

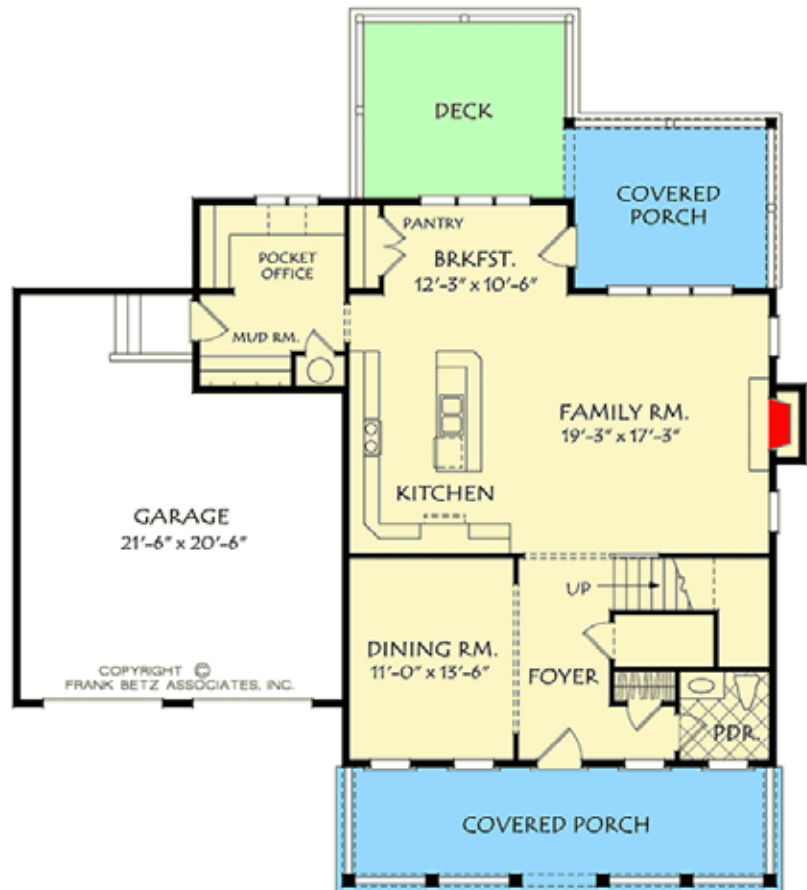
MOBILE: 860-608-1708

EMAIL: joycecovone@bhhsne.com

THE PALMER ESTATE PLANS

- Total Sq. Ft. 2,616
- 4 Bedrooms
- 2.5 Bathrooms

FIRST FLOOR



SECOND FLOOR




Edgewater Hill

VISIT US AT

EDGEWATERHILL.COM